

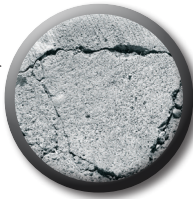


FLEX DIAMANTSLIPSKÅLSGUIDE DIAMOND GRINDING CUP GUIDE



Vilket material?
 Which material?

Which material?



HÅRDA MATERIAL (EJ STEN)

T ex betong, hård puts, betonggrader, hård spackel, håldäck. *X Magic för extra hård betong. **Turbo och Vulture – utmärkt även i natursten.

HARD MATERIAL (NOT STONE)

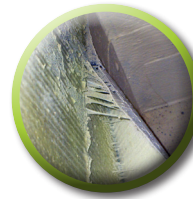
For example: concrete, hard putty, hard concrete, hollow core. *X Magic for extra hard concrete. **Turbo and Vulture – perfect as well for natural stone.

BELÄGGNINGAR

Kletande beläggningar såsom målarfärg, lim, tjära, mjukputs, epoxy, polyuretan.

COATINGS

Sticky coatings such as paint, glue, tar, plaster, epoxy, fix, PU.



Hur mycket ska avverkas?
 How much to remove?

How much to remove?



**VÄLJ!
 CHOOSE!**



BLACK MAGIC

125 | 304,728
 150 | 304,738
 180 | 258,630



BOOMERANG

125 | 304,732
 150 | 100,262



**TURBO

125 | 100,164



BLACK ARROW

125 | 304,736
 150 | 100,263
 180 | 100,171



PCD

Diam/Segm | P/N
 125/12 | 304,731



PCD X

Diam/Seg	Mod	P/N
125/6X1	100,157
125/6+3X12/6	100,290
150/6+3X15/6	100,158
180/6X2/6	100,159
180/12X2/12	100,160



*X MAGIC

125 | 100,295



BLACK ARROW

125 | 304,736
 150 | 100,263
 180 | 100,171



**VULTURE

125 | 100,162
 150 | 100,265

● **CENTRUMHÅL/BORE: Ø 22,23 MM**

Ø 125 mm: Vulture: M14.

Ø 150 mm: Inkl håladapter till/Incl. bushing to 19 mm.