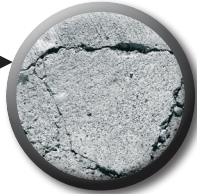


Vilket material?

Which material?



### HÅRDA MATERIAL (EJ STEN)

T ex betong, hård puts, betonggrader, hård spackel, håldäck.

### HARD MATERIAL (NOT STONE)

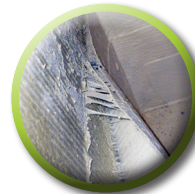
For example: concrete, hard plaster, hard putty, hollow core.

### BELÄGGNINGAR

Kletande beläggningar såsom målarfärg, lim, tjära, mjukputs, epoxy, polyuretan.

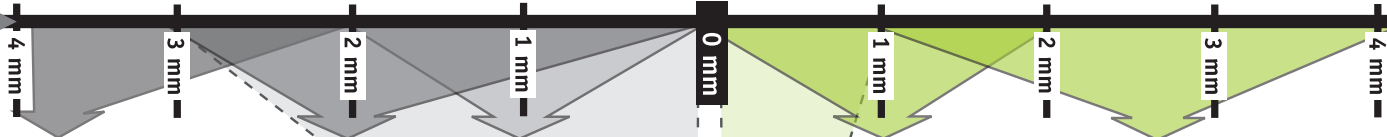
### COATINGS

Sticky coatings such as paint, glue, tar, plaster, epoxy, fix, PU.



Hur mycket ska avverkas?

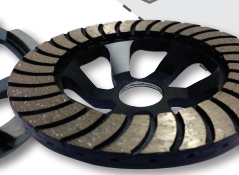
How much to remove?



**VÄL!  
 CHOOSE!**



**BLACK WIRL**  
 125 | 304,729



**TURBO**  
 125 | 100,221



**BOOMERANG LIGHT**  
 125 | 304,733



**PCD X4/12**  
 Diam/Segm | P/N  
 125/12 | 100,246



**PCD X4/6**  
 Diam/Segm | P/N  
 125/6 | 100,245

**ARROW LIGHT**  
 125 | 304,734



• **CENTRUMHÅL/BORE**  
 Ø 23,5 MM.



**PASSANDE FÖR FLEX BETONGGIRAFF® | SUITABLE FOR FLEX CONCRETE GIRAFFE®**